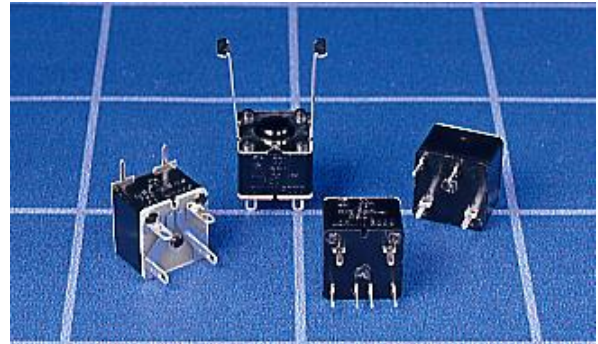


MS 2000 MAINS SWITCH MODULES

GENERAL ELECTRICAL & MECHANICAL SPECIFICATION

Switch Rating:	4/80A @ 250Vac R/C
Life:	>15,000 Cycles
Operating Temp:	-25°C to +85°C
Proof Voltage:	2.5KV (Initial)
Insulation Resistance:	>999 MΩ @ 500V DC (Initial)
Contact Resistance:	<20 mΩ (Initial)
Contact Gap:	>2.5mm
Switch Contacts:	Silver Cadmium Oxide
Switch Chamber:	Polyamide 6.6 G.F. V0 Rated
Tag Panel:	SRBP
Terminals:	Brass CZ108 Ag Plated

RoHS COMPLIANT



ENEC APPROVED TO EN61058 BY VDE
Note: CHANGEOVER TYPE HAS NO APPROVALS.

2 POLE OFF-ON (NORMALLY OPEN)		
	PLATE	BRACKET
ORDERING CODE	MS2126 60° SOL	MS2071 90° SOL
	MS2074 30° SOL	

2 POLE 1 OFF 1 ON		
	PLATE	BRACKET
ORDERING CODE	MS2145 60° SOL	MS2072 90° SOL
	MS2075 30° SOL	

2 POLE ON-OFF (NORMALLY CLOSED)		
	PLATE	BRACKET
ORDERING CODE	MS2163 60° SOL	MS2078 90° SOL
	MS2133 30° SOL	

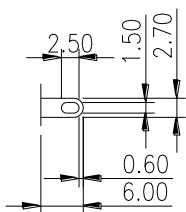
	SPECIAL PLATE	SPECIAL BRACKET
	MS2170 30° PCB	MS2121 30° SOL
By externally linking the two pole terminals a 1 pole c/o is made		

2 POLE CHANGEOVER (Not Approved)		
	PLATE	BRACKET
ORDERING CODE	MS2146 60° SOL	MS2073 90° SOL
	MS2076 30° SOL	

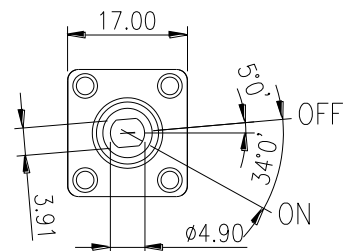
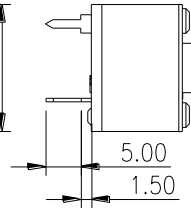
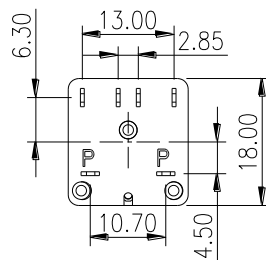
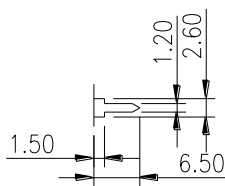
Variants available include Non Bracketed, Bracketed, Plate mounting, Pcb, Solder and with or without stops. Contact our Sales Office with your requirements.

STANDARD SWITCH DETAIL

SOLDER

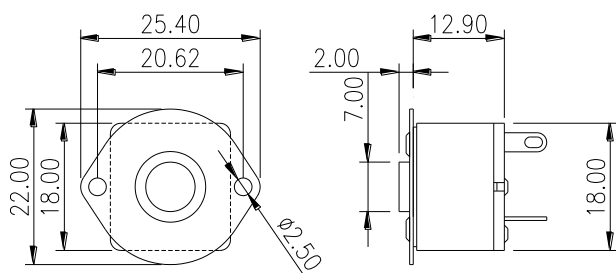


PCB



Orientation in OFF-Position
ie Fully anti-Clockwise

PLATE MOUNTING



MOUNTING BRACKET

